



RETAIL MSRP Pricing February 1st. 2018 Part 3

NEW! HONDA K-Series DOG BOXES

GEAR-X USA is proud to have been appointed as authorized distributors for SQS RACING (Czech Republic) and we are now able to offer the very best in Close Ratio , Helical and Straight Cut Dog Gear Kits for HONDA, AUDI, SUBARU, MITSUBISHI EVO, TOYOTA & BMW. Available NOW!
K-SERIES Close Ratio Dog Gear Kits - For serious road race use only



DOG GEAR SETS

K- Series (6) Six Speed ROAD RACE KIT



PART NO.

GX-DOG- 6 HK20

Description

MSRP US \$5895.00

Fully Helical cut, 6 Speed with Dog engagement. FIA

homologated ratios which can be used with OEM or our custom Ratio GEAR-X final drives. The Kit uses OEM Forks & Selectors. All gears have 5 engagement dogs for smoother changes at high revs. Suitable for Full race – High Horsepower Honda K-20 or K-24 where very close ratio applications are required, such as road and gravel rallying, Sprints, Hill climbs or Road race.

Ratios: 1st - 2.455 2nd – 1.667 3rd - 1.337 4th - 1.105 5th – 0.95 6th – 0.857

Kit consists of: A custom Main shaft, 4 custom Main Shaft Gears and Six Counter Shaft Gears. The kit includes a Helical cut Final Drive of your choice ranging from: **4.058, 4.50, 4.767, 4.090, 5.08, 5.273, 5.46, 5.84, 6.300** This Gear kit is for serious Rally/Road racing use only.

Add \$200.00 For Custom Final Drive Ratios: 4.50, 4.090. 5.273





DOG GEAR SETS

K-Series (4) FOUR SPEED DRAG RACE KIT

PART GX-DOG- 4 HK20

MSRP US \$4895.00

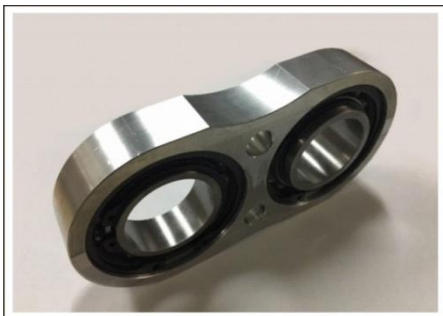
Following the wildly popular GEAR-X DRAG II 4 Speed K-20 Kits we began producing a few years ago.

We have once again stepped up to the late and Commissioned our European Manufacturers to Design and produce a full Dog Engagement 4 Speed Gear Set with Helical Gears,

This set was originally designed to suit All Motor Applications producing 400+HP and to utilize the Stock OEM Final Drive Ratios. However, with the Inclusion of the Billet machined 5th Gear Cuff Brace (Included) and using one of our GEAR-X Final Drives we are finding that much higher Power is being handled with no problem.

The DOG kit is compatible with original Final Drive (fits on original Pinion) Final Drives are compatible with original synchromesh type gears!

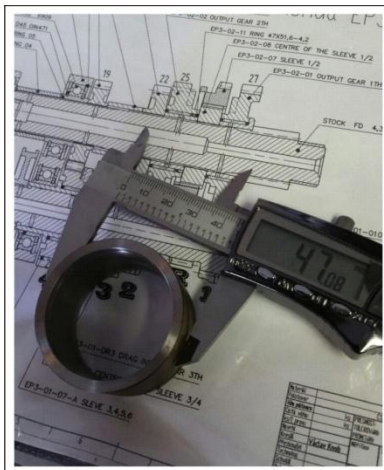
Extremely strong teeth profile – The Euro designed 5 DOG-CLUTCHES are extremely durable! Kit includes all gears, shafts, sleeves + hubs - All bearings used are OEM original - Forks used are OEM



RATIOS:

1st. 2.455 2nd. 1.667
3rd. 1.263 4th. 1.000

Kit comes with Cuff Brace and Bearings



Full assembly instructions and tolerances provided



DOG GEAR SETS

B-Series (5) FIVE SPEED

ROAD RACE KIT

MSRP - \$5295.00

**PART No. GX HO-B CR DOG 5
(Race Spec)**

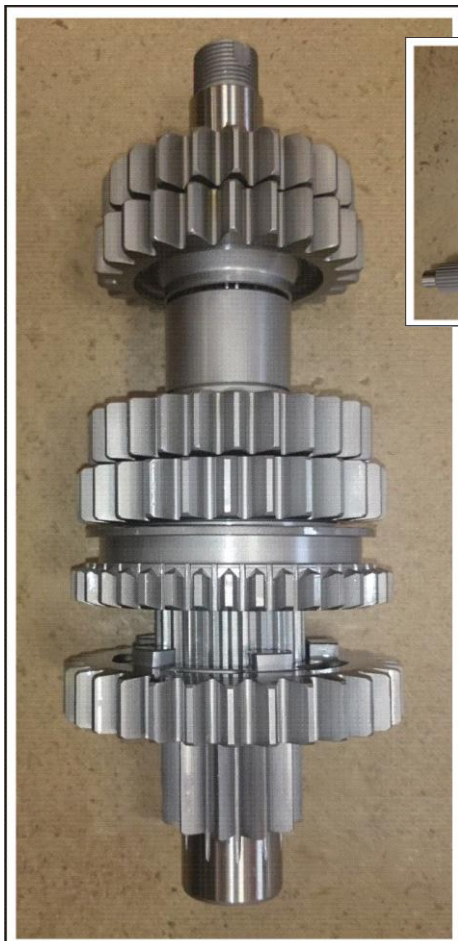
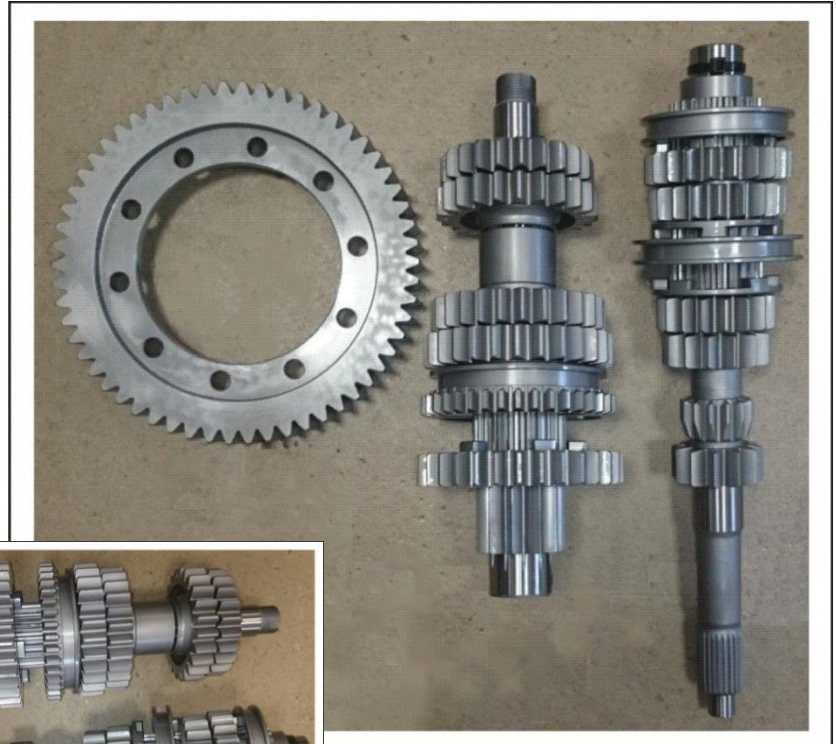
PART NO.

GX HO B CR-DOG 5 (Race Spec)

GEAR-X USA is proud to offer the very best in Straight Cut Dog Gear kits for B Series HONDA's

We have tested a range of intermediate and final drive ratio options and we are now introducing this set of ratios ideally suited for Road Racing –

At a 9200 rpm shift 23.97 diameter tires. This is a normal "16 or "17 race tire. If using "15 wheels with a 1600 cc engine then the overall reduction in gearing should be excellent



S4C/S80 5 SPEED ROAD RACE RATIOS

GEAR	TOOTH COUNT		RATIO
1.gear	31	12	2.583
2.gear	27	14	1.929
3.gear	26	17	1.529
4.gear	23	18	1.278
5.gear	22	20	1.100

FINAL DRIVE RATIOS

55	12	4.583
54	11	4.909
58	11	5.273
58	10	5.800

**Custom 3.125 and 3.60:1
Ratios available by Special Order**